



FINAL MASTER PLAN : 2030
March 2017

PROPOSED LAND USE
SHEET NO : D11

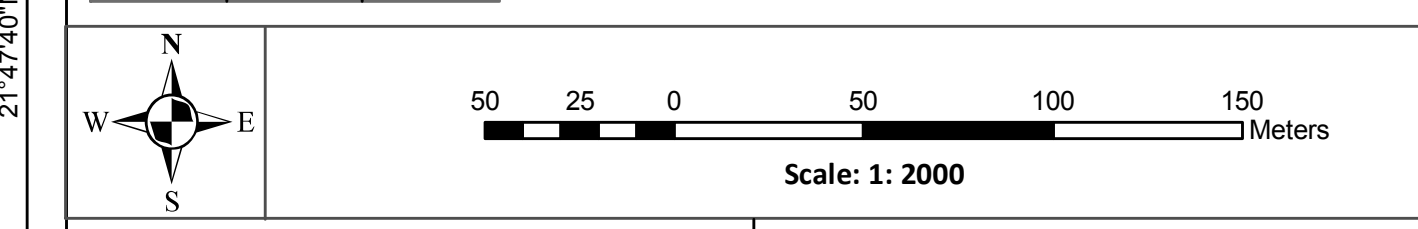
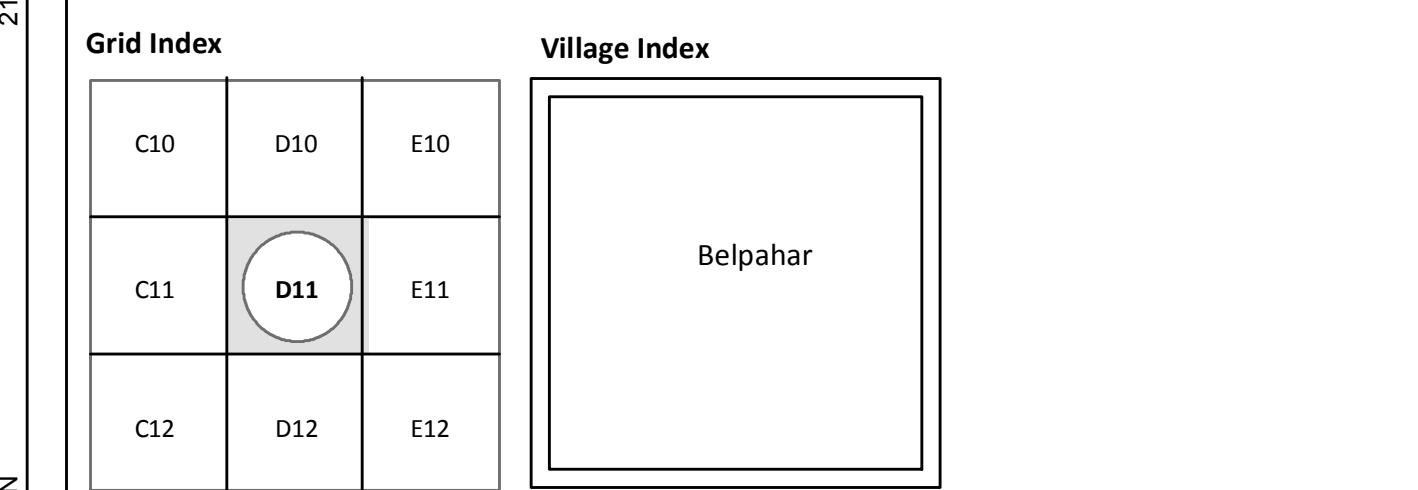
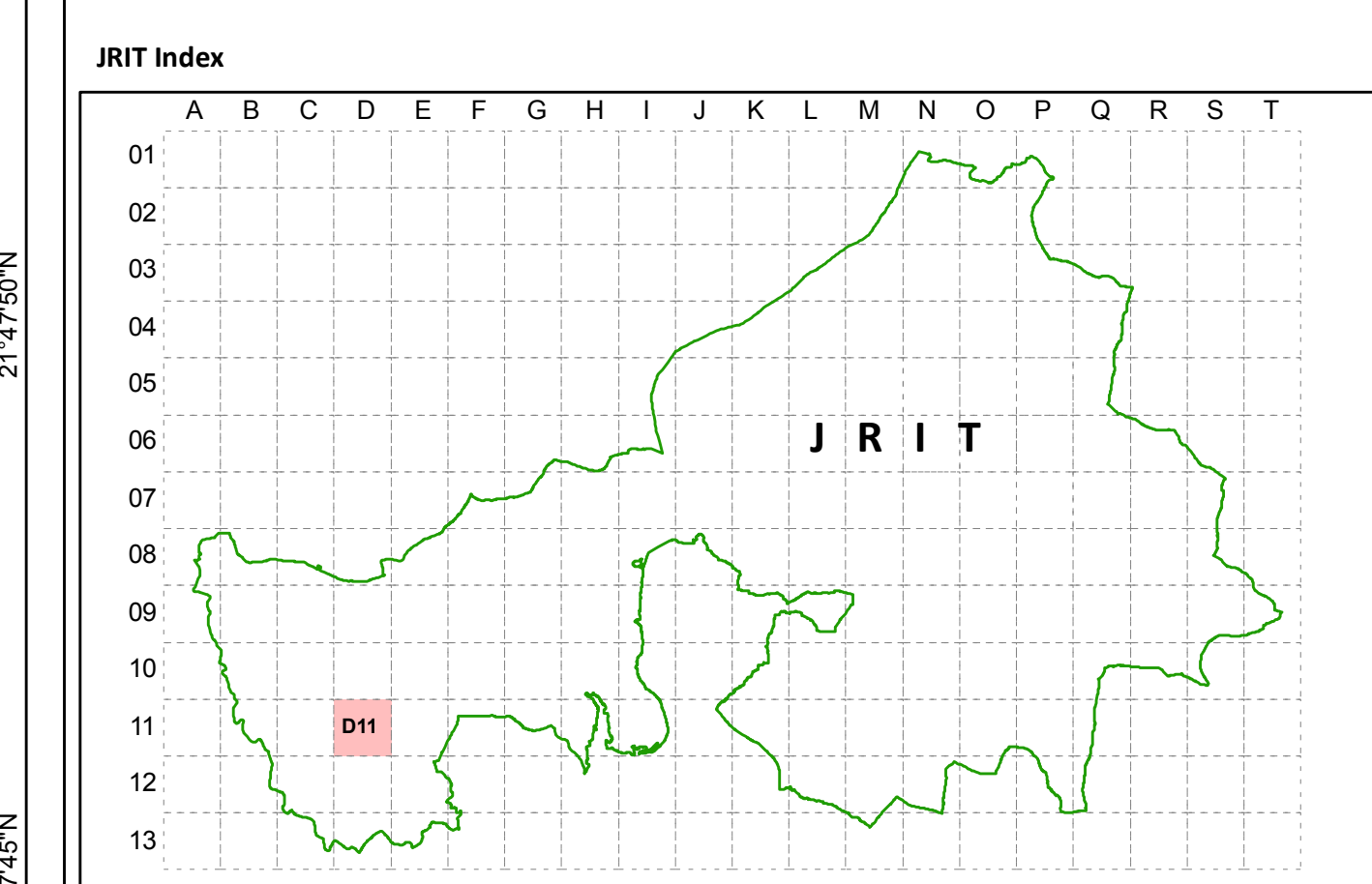
[Village: Belpahar (P)]

LEGEND

- Dosimali
- △ Trisimali
- ⊕ Mustakil Chand
- ⊞ Chauthamali
- ⊕ Patharabani
- JRIT Boundary
- Mouza Boundary
- Rail line
- G Govt. Plot

Land Use

- Residential
- Commercial
- Storage yards
- Institutional
- Public Utilities
- Transport
- Industrial
- Mining/ Quarries
- Recreational/ Openspace
- Agriculture and Allied
- Plantation
- Forest
- Water Body



Secretary: Jharsuguda Regional Improvement Trust
 Chairman: Jharsuguda Regional Improvement Trust

Consultants: **SPARC** Spatial Planning & Analysis Research Center Pvt. Ltd.
 E/11, Infocity, Chandaka Industrial Estate, Bhubaneswar - 751024

