



FINAL MASTER PLAN : 2030
March 2017

PROPOSED LAND USE
SHEET NO : B11

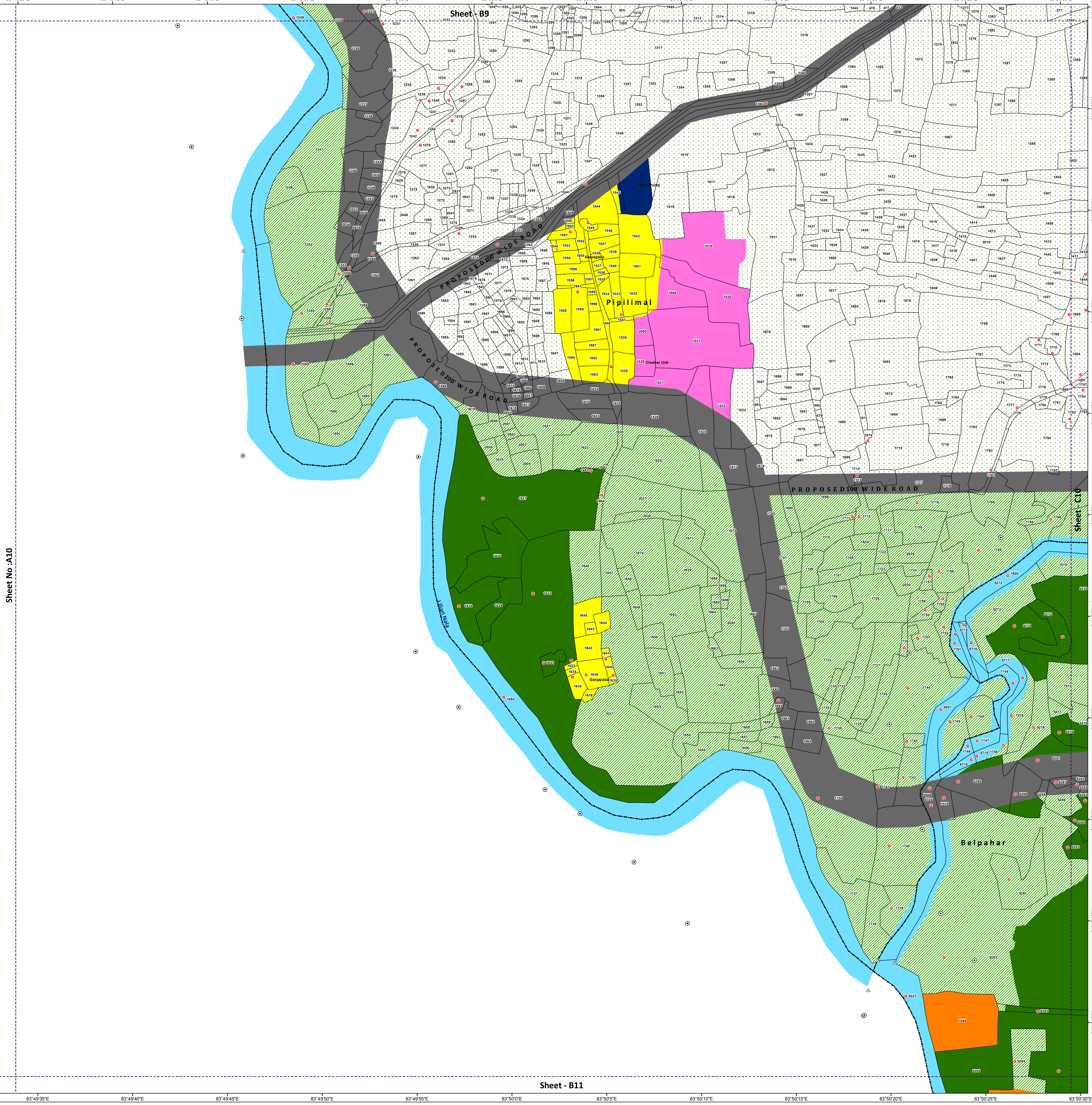
(Village: Pipilimal (P) and Belpahar (P))

LEGEND

- Dosimali
- △ Trisimali
- ⊕ Mustakil Chand
- Chauthamali
- ⊕ Patharabani
- JRIT Boundary
- Mouza Boundary
- Rail line
- Ⓜ Govt. Plot

Land Use

- Residential
- Commercial
- Storage yards
- Institutional
- Public Utilities
- Transport
- Industrial
- Mining/ Quarries
- Recreational/ Openspace
- Agriculture and Allied
- Plantation
- Forest
- Water Body

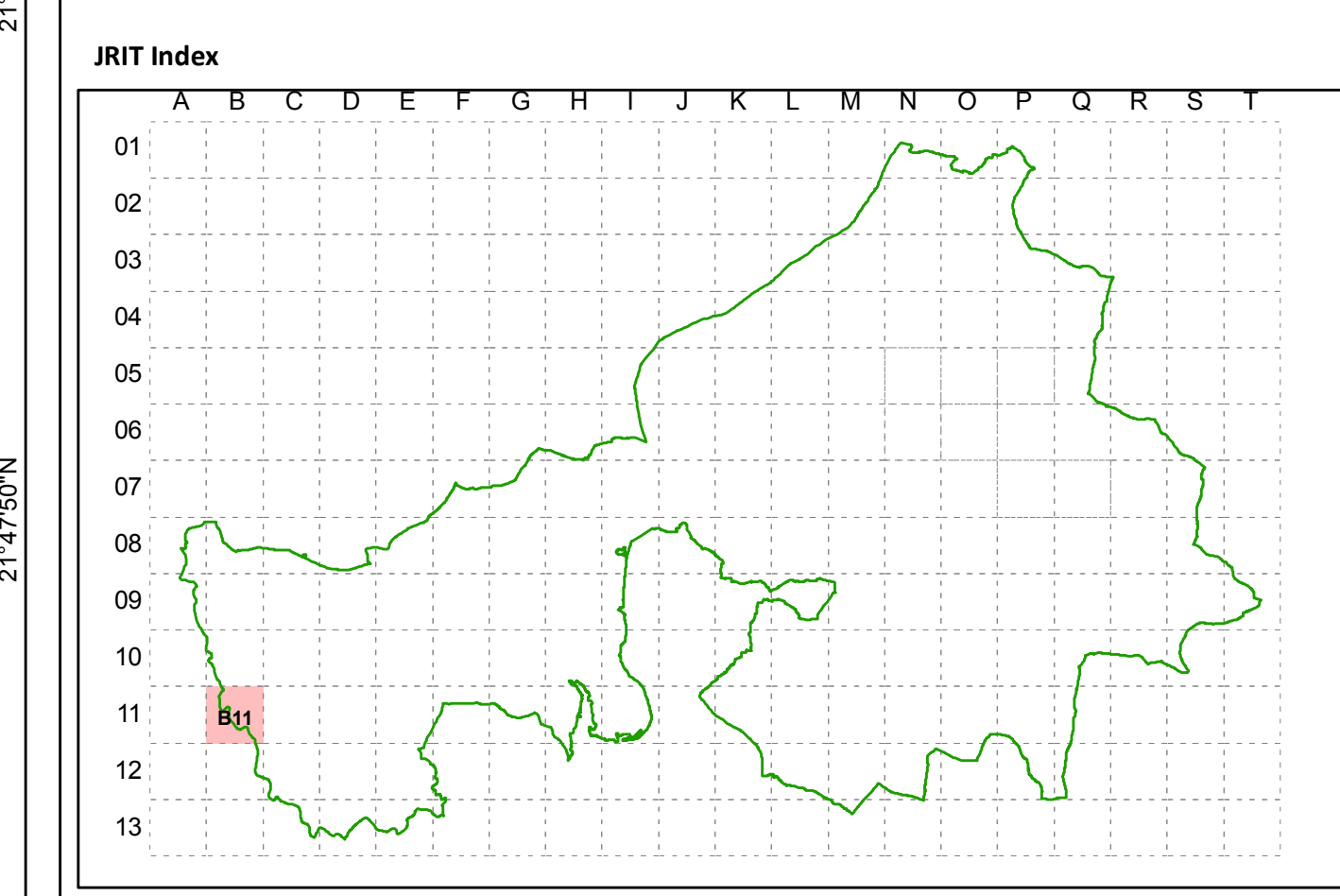


Sheet No. : A10

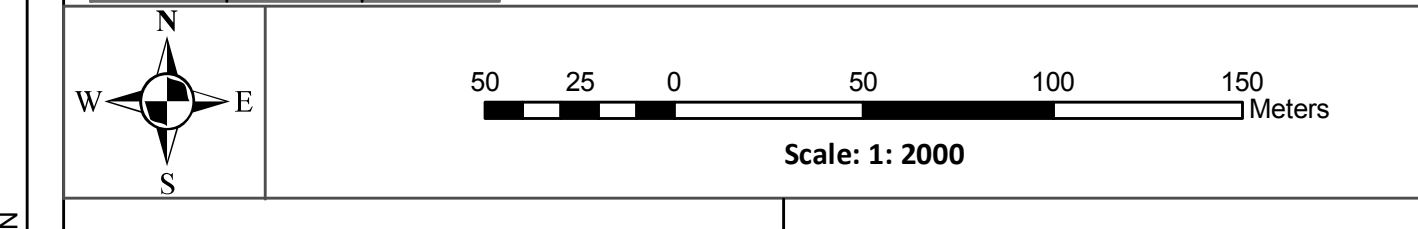
Sheet - B9

Sheet - C10

Sheet - B11



Grid Index			Village Index	
A10	B10	C10	1	2
A11	B11	C11		
A12	B12	C12		



Secretary
Jharsuguda Regional Improvement Trust

Chairman
Jharsuguda Regional Improvement Trust

Consultants:
SPARC Spatial Planning & Analysis Research Center Pvt. Ltd.
E/11, Infocity, Chandaka Industrial Estate, Bhubaneswar - 751024