



FINAL MASTER PLAN : 2030

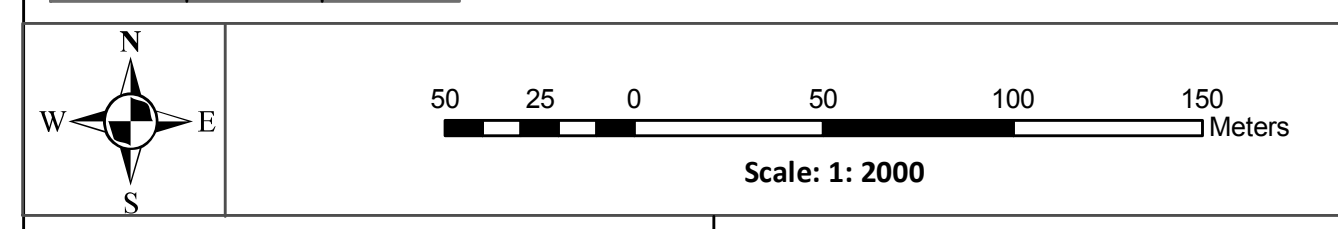
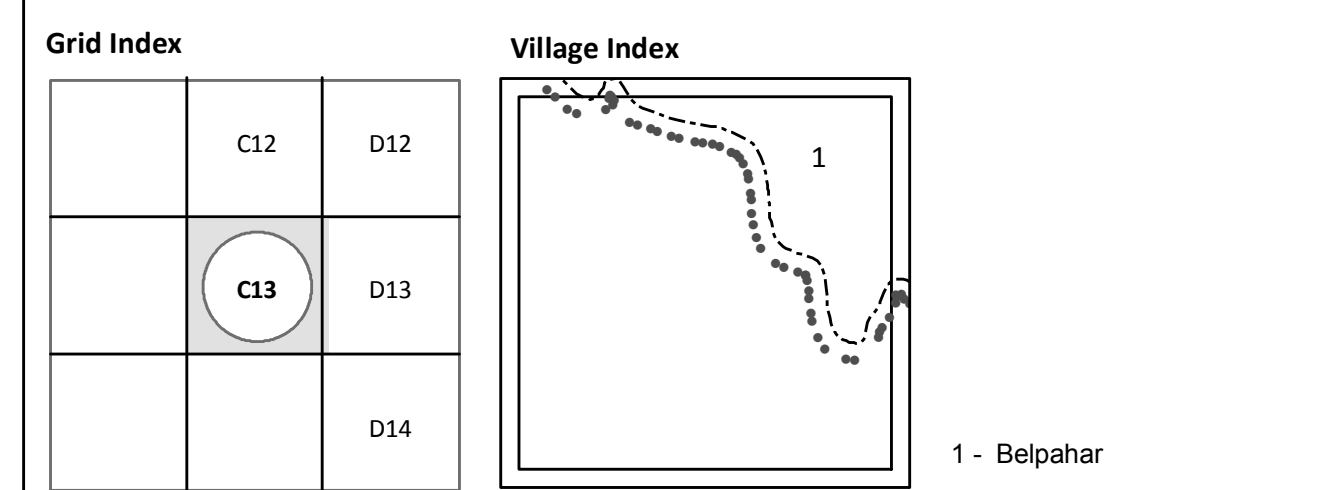
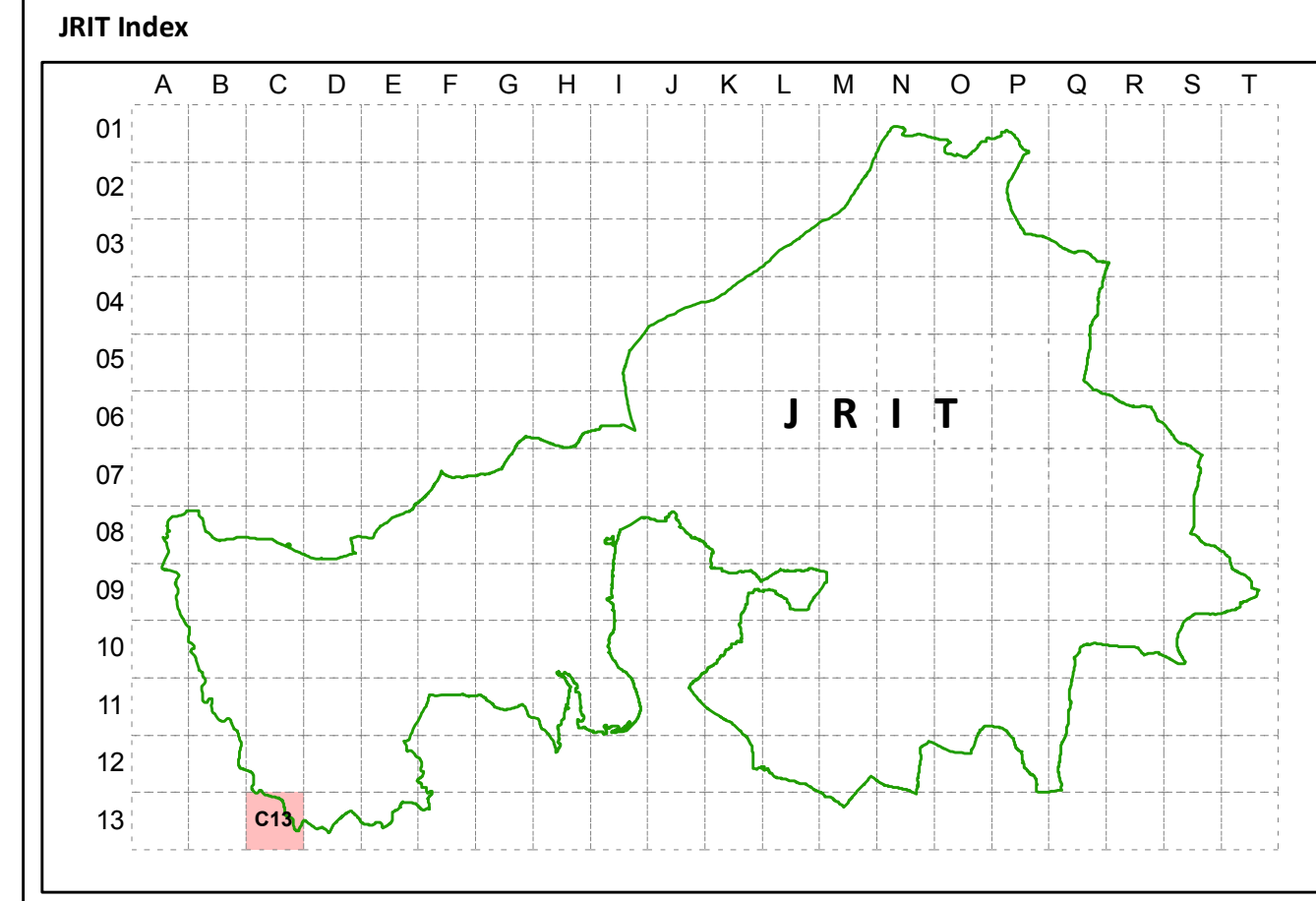
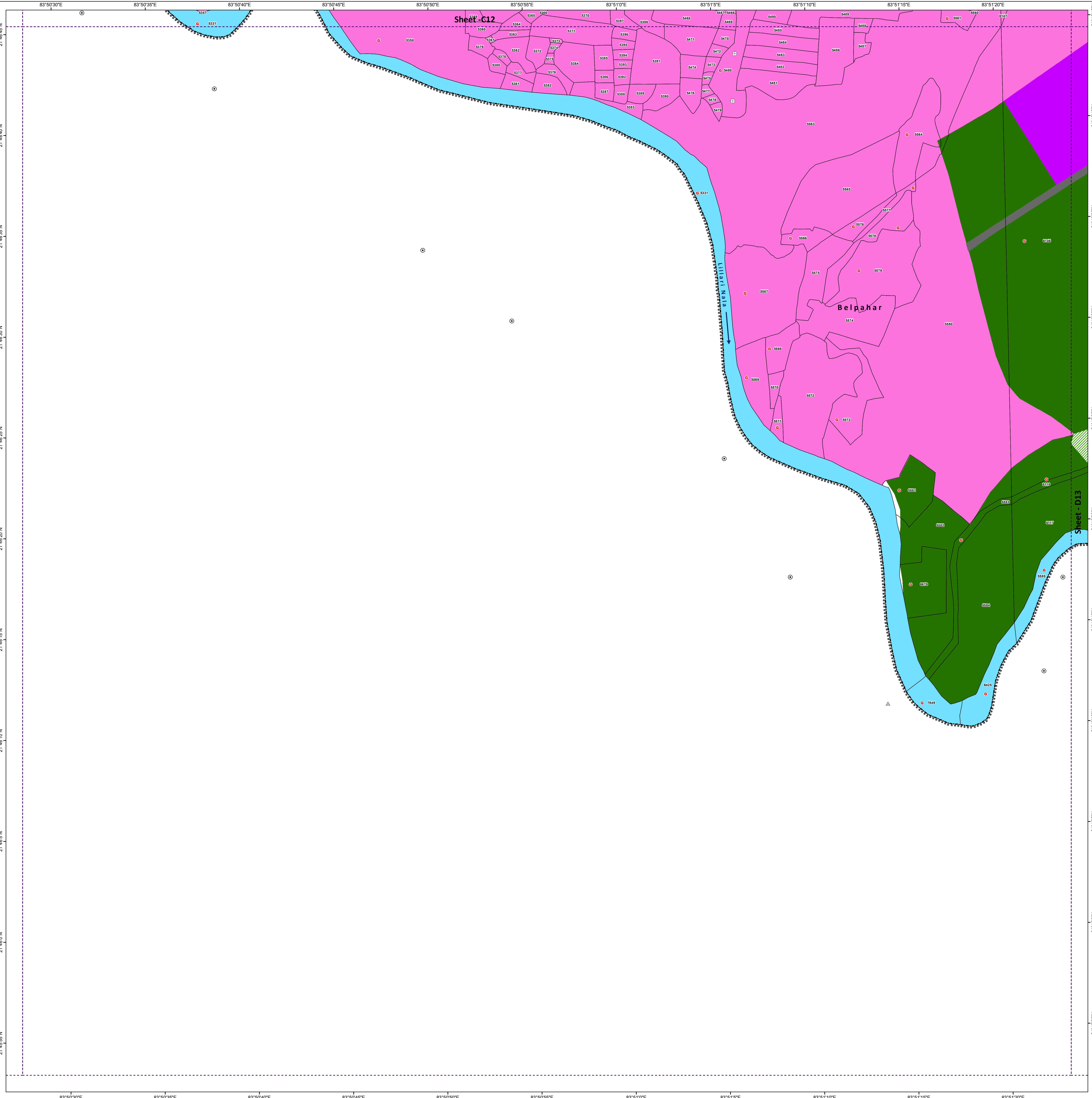
March 2017

PROPOSED LAND USE SHEET NO : C13

[Village: Belpahar (P)]

LEGEND

- Dosimali
- Trisimali
- Mustakil Chand
- Chauthamali
- Patharabani
- JRIT Boundary
- Mouza Boundary
- Rail line
- Govt. Plot
- Land Use**
- Residential
- Commercial
- Storage yards
- Institutional
- Public Utilities
- Transport
- Industrial
- Mining/ Quarries
- Recreational/ Openspace
- Agriculture and Allied
- Plantation
- Forest
- Water Body



Secretary
Jharsuguda Regional Improvement Trust

Chairman
Jharsuguda Regional Improvement Trust