



FINAL MASTER PLAN : 2030

November 2016

PROPOSED LAND USE SHEET NO : C10

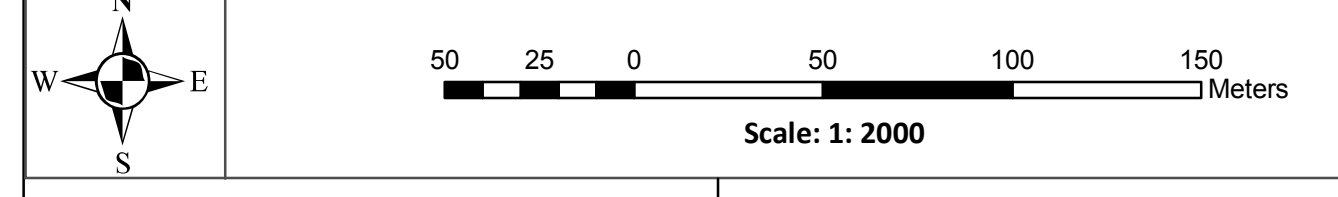
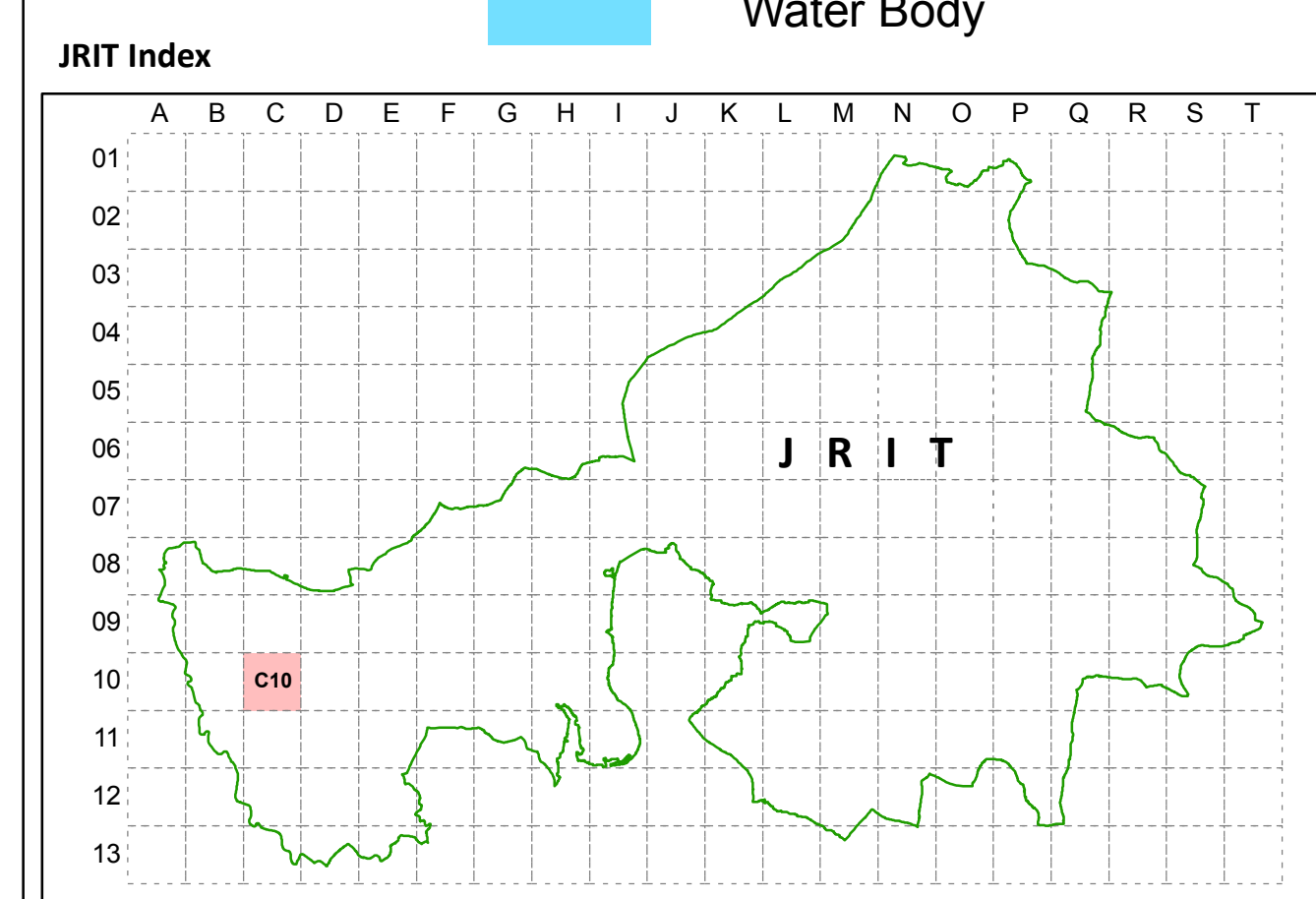
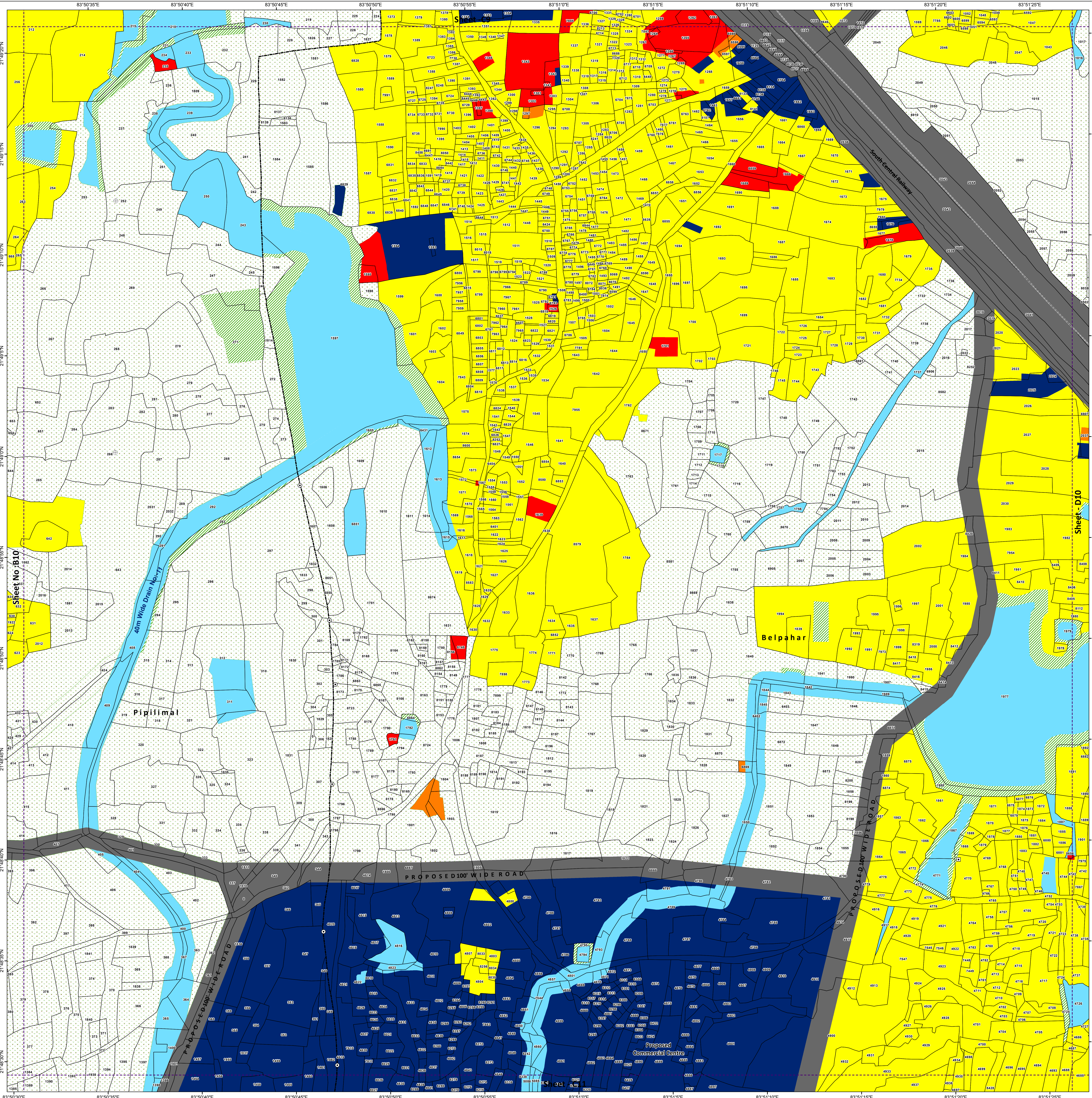
[Village: Pipilimal (P) and Belpahar (P)]

LEGEND

- Dosimali
- △ Trisimali
- ⊕ Mustakil Chand
- Chauthamali
- ⊕ Pathrabani
- JRIT Boundary
- Mouza Boundary
- Rail line

Land Use

- Residential
- Commercial
- Storage yards
- Public \ Semipublic
- Public Utilities
- Transport
- Industrial
- Mining/ Quaries
- Recreational/ Open Space
- Agriculture and Allied
- Plantation
- Forest
- Water Body



Secretary
Jharsuguda Regional Improvement Trust

Chairman
Jharsuguda Regional Improvement Trust

Consultants:
 Spatial Planning & Analysis Research Center Pvt. Ltd.
 E/11, Infocity, Chandaka Industrial Estate, Bhubaneswar - 751024